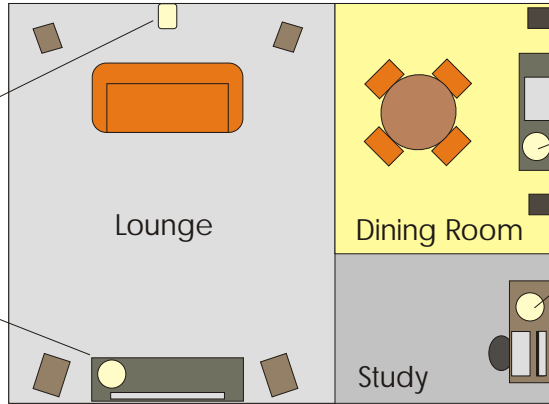


Bard wireless amplifier to power rear speakers.



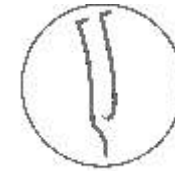
Bard transmitter to transmit rear channel audio.



Bard receiver and second audio system to receive music in here.



Bard transmitter or BardUSB transmitter to broadcast any audio files and internet radio from your computer to every room.



# Bardaudio

wireless digital audio  
+USB

Send music from your Hi Fi system, music server, MP3 Player or computer to anywhere in your home!

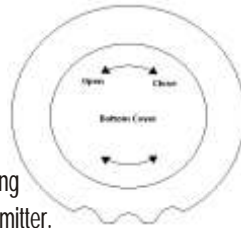
**Useful hints:**

If you have a Wi-Fi router at home and you are experiencing connection issues, set your router to a high channel number. This is because if the Bard transmitter cannot find a clear channel to transmit it will start on Channels 1-4.

You can force the Bard USB Transmitter to search for the "best" transmit channel again in 2 ways: Disconnect and reconnect the BardUSB from the computer, or by holding down the Channel button between 3-5 seconds and releasing it.

**Gain setting:**

Open the back cover and observe the label inside:



Always use the USB setting unless you are using it with the Bard Line transmitter.

To change gain, remove bottom cover, locate the gain setting jumper and move it to the desired position (See diagrams inside the unit).

**Technical specifications:**

Supply voltage: 9-12V d.c.  
**Transmitter + Receiver:**  
 Frequency response: 20Hz(0.1dB) - 20kHz (-2dB)  
 Dynamic range: 89dB  
 THD+Noise @ 1kHz: -75dB / 0.018%  
 Channel separation: 108dB  
 Operating frequency: 2400 - 2483.5MHz  
 Available channels: 11 or 13 depends on country  
 Transmitting power: 15 dBm  
 Receiving sensitivity: -82dBm  
 Range: up to 50m (L.O.S.)  
 Power consumption: Tx<1.75W, Rx<0.8W (Operating)

**RF Channel frequency**

Channel	Frequency	Channel	Frequency
1	2412	8	2447
2	2417	9	2452
3	2422	10	2457
4	2427	11*	2462
5	2432	12*	2467
6	2437	13*	2472
7	2442		

\* Country dependent

**Power supply:**  
 Universal input: 100-240V @ 50-60Hz  
 Output: 9V @ 1.5A d.c.  
 Selectable UK, US, Euro plug head.

Uncompressed wireless transmission . High end sound quality . Auto scans for "best" transmission channel - Unlimited number of receivers can be used - Suitable for multi room installations - Very short latency suitable for home cinema use - WiFi, cordless phone co-existence - Discrete cream coloured paintable housing - Operates on unlicensed 2.4GHz ISM band - Transmit Range up to 50m (L.O.S.) - Phono RCA connectors for input and output - 9 to 12V DC power operated - Built-in antenna.

# Bardaudio

Wireless high end quality Digital audio.

## Connections:

The Bard receiver is very simple to hook up!

At the back you will find 3 connectors: Left to right are Right Channel, Power connector, Left Channel. Connect the Left and Right Channel to your amplifier, (Line in or Aux in). Once you have verified your connections you can connect the power adapter to the unit.

At the front you will see a small slot where the power and signal indicator is. You will see an RED light when the unit is powered and Orange when there is signal being transmitted or received.

## Your power adapter:

First, select the correct plug pin configuration for your country. UK, US and European plug configuration is supplied with every Bard device.

Then simply slide the plug pin into the power adapter and press it firmly until secure. If you have any doubt please contact your supplier or a qualified electrician.

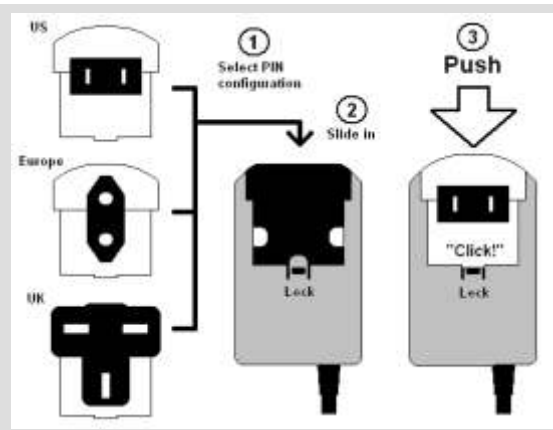
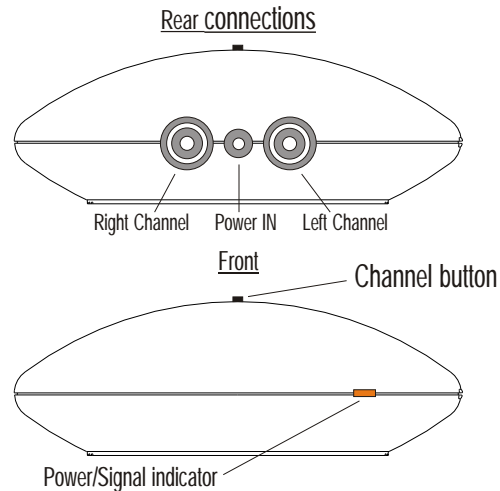
Connect the audio cables and the power lead to the bard and you are up and running.

## Please note:

Radio waves cannot go through metal objects.

Although the BARD is an omnidirectional device, due to the cabling at the rear of the unit. The system is most efficient when the Transmitter and Receiver are facing each other.

It is recommended that you position the units as high as possible to avoid possible signal reflection or absorption from your surroundings.



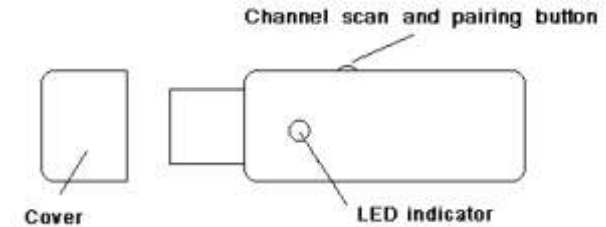
Most efficient zone is towards the front.



## Installing the BARD USB:

With your computer on, insert the BARD USB transmitter into the USB port of your computer and auto installation will begin. Once it is ready to use the GREEN light on the unit will come on. Now your computer's music player will automatically play music through the Bard USB.

If you are using MAC OS, you will have to go to System Preferences and in the DOCK or Apple Icon on top left you will find the menu to allow you to select USB audio (you will only have to do this once).



## Bard in operation:

Once powered up, the Bard USB transmitter will automatically scan for the "best" channel to transmit your music. The receiver will then automatically tune to your Bard Transmitter.

In the unlikely event you are experiencing some interference, you can press the Channel button momentarily to change to another channel. You can also force the Transmitter to re-search for another "best" channel to transmit by holding down the Channel button between 3-5 seconds (release the button when the green light goes out). The Receiver will again automatically re-tune to the new channel.

## NB.

If you would like to add more Bard units to your system, each additional unit will need to be "paired" with your existing Bard units.

To pair your receiver with your transmitter:

1. Power up both units to be paired and keep them within 60cm of each other.
2. Hold down the button on the USB transmitter until the green light flashes.
3. On the receiver, hold down the button on the until it flash briefly and will stay on. The receiver is now "paired" to the transmitter (If the red light keeps flashing repeat step 1).
5. Release the pairing button on your transmitter if you don't need to pair any more units.

You can have up to 4 transmitters and unlimited numbers of receivers all working together as a system.

To save power and your carbon emission, the Bard Transmitter will automatically power down after 30 minutes of inactivity. It will resume transmission when music restarts and this could take up to 3 seconds.